

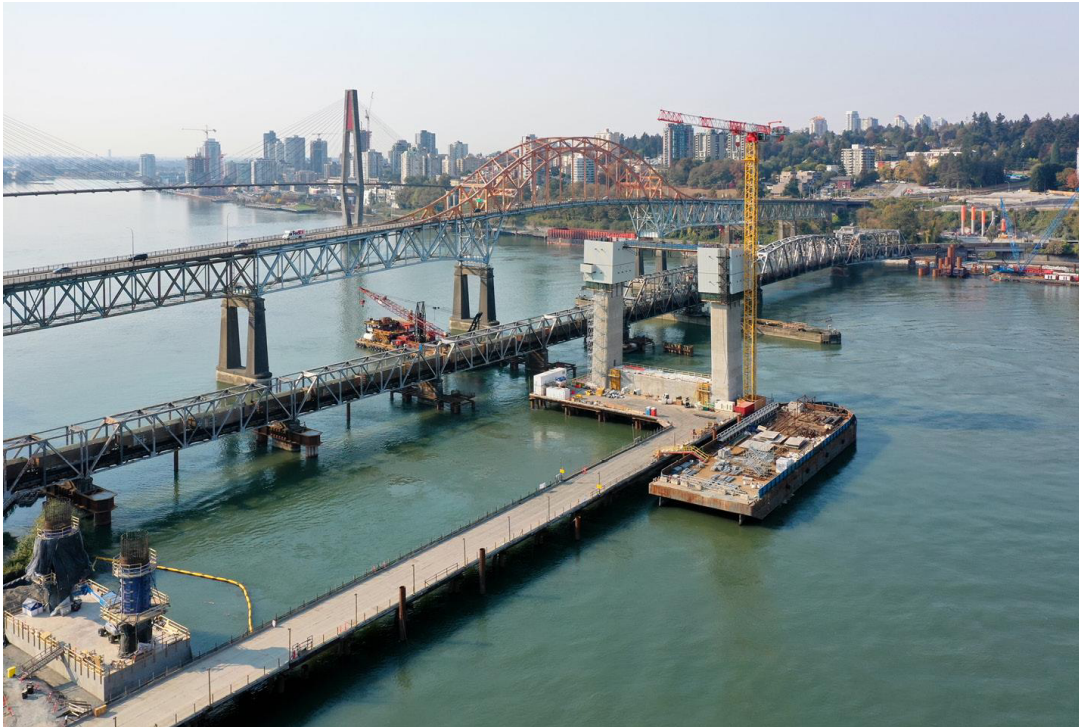


# New Pattullo Bridge

Surrey-New Westminster, BC, Canada / 2015-2018

Structural type  
Client  
Scope

Cable-stayed bridge with 332m-long principal span  
FRASER CROSSING PARTNERS (ACCIONA-AECON)  
CAT3 check



The new Pattullo Bridge over the Fraser River will connect the city of Surrey, to the South with New Westminster to the North, South of Vancouver. The bridge is an asymmetric cable-stayed bridge with a main span of 332 m (1089'), and composite steel/concrete access spans both to the North and to the South. The bridge will open with a 4-lane traffic configuration, including two multi-use paths, but is prepared to be widened to a 6-lane configuration. The local conditions are complex due to the large seismic action which also includes liquefaction plus kinematic forces due to displacement of the upper layers of ground during a seismic event.

FHECOR is responsible (EOR) for the Category 3 checking of the structure which is being designed by LAP and HATCH.



C/ Barquillo 23, 2º | 28004 Madrid | España  
T. (+34) 917 014 460 | F. (+34) 915 327 864  
[www.fhecor.com](http://www.fhecor.com) | [fhecor@fhecor.es](mailto:fhecor@fhecor.es)